

13620 178th Ave NE, Redmond

| \$1,100,000

## GLENTERRA NEIGHBORHOOD



Complete details, photos, 3D tour, 4K video tour and Pre-Inspection at:

# EnglishHillTwoStory.com



www.EastsideHomes.com  
425-466-1000







## *Beautiful Two Story Home in Glenterra on English Hill*

The light-filled 2,010 s.f. floorplan features 3 bedrooms, 2.5 baths on private & lush 7,507 s.f. lot. Special features include: Spacious kitchen with huge breakfast bar peninsula, refinished hardwood floors, newer carpet & laminate flooring, and covered front patio and courtyard entry!

Stunning light-filled entry with gorgeous laminate floors offers beauty and function, with connectivity to all areas of the home. Bright and open formal living room with decorative tray ceiling, large windows, and ample space for entertaining. Formal dining room with soaring ceiling just off the kitchen. Large kitchen with solid surface counters, beautiful oak cabinetry, tile backsplash, stainless steel appliances, oversized breakfast bar peninsula, and additional eating area. Family room with ample space and slider access to the back yard. Powder room on main floor, perfect for guests!

Gorgeous primary suite with vaulted ceiling and spacious primary bath. Large primary bath features double vanity with solid surface counters, shower over tub, and spacious walk-in closet. Two additional spacious bedrooms upstairs filled with natural light. Adjacent hall bathroom with updated laminate floors.

Fully fenced, private yard with ample space to relax, entertain or play! Laundry located on main level leading out to garage, washer & dryer included! Attached two-car garage with storage.

Northshore schools - Sunrise Elementary, Timbercrest Middle School & Woodinville High. School.







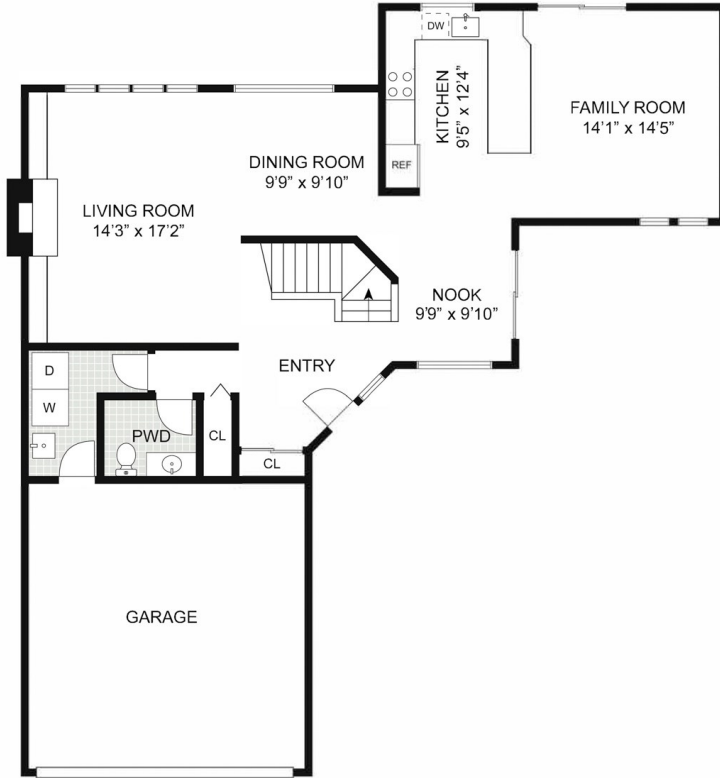


VIEW PROPERTY DETAILS ON YOUR PHONE

Type Website or Scan the QR Code to gain instant access

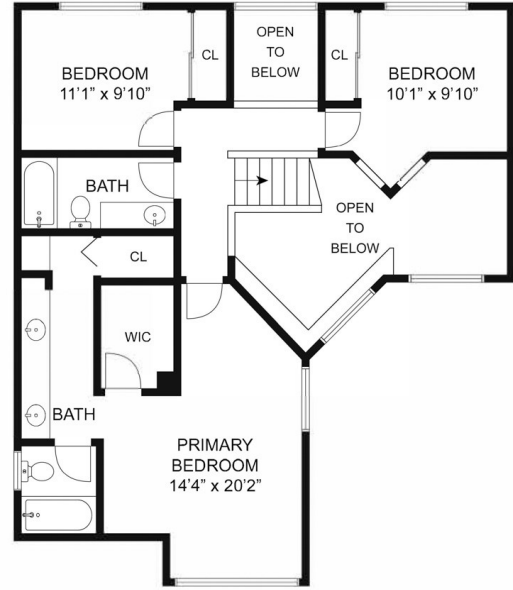


Property Details | Property Disclosures | Pre-Inspection Report  
Additional Photos | 3D Walkthrough | Video Tour



FIRST FLOOR

SIZES AND DIMENSIONS ARE APPROXIMATE, ACTUAL MAY VARY.



SECOND FLOOR

# Home Features

Bedrooms 3 | Baths 2.5 | 2,010 Square Feet | 7,507 Sq. Ft. Lot | Covered Front Patio!

<b>Style</b>	Two Story
<b>Bedrooms</b>	1 Primary Bedroom, 2 Additional Bedrooms
<b>Baths</b>	2 Full Baths, 1/2 Guest Bath
<b>Flooring</b>	Hardwood, Laminate, Carpet
<b>Entry</b>	Stunning light-filled entry with gorgeous laminate floors.
<b>Living Room</b>	Bright and open formal living room with decorative tray ceiling, large windows, and ample space for entertaining.
<b>Dining Room</b>	Formal dining room with soaring ceiling.
<b>Kitchen</b>	Large kitchen with solid surface counters, beautiful oak cabinetry, tile backsplash, stainless steel appliances, oversized breakfast bar peninsula, and additional eating area.
<b>Family Room</b>	Family room with ample space and slider access to the back yard.
<b>Powder Room</b>	Powder room on main floor, perfect for guests!
<b>Primary Bedroom</b>	Gorgeous primary suite with vaulted ceiling, spacious primary bath, and walk-in closet.
<b>Primary Bathroom</b>	Large primary bath features double vanity with solid surface counters and shower over tub.

<b>Bedrooms</b>	Two additional spacious bedrooms upstairs filled with natural light.
<b>Laundry</b>	Laundry located on main level leading out to garage. Washer & dryer included!
<b>Hall Bath</b>	Full hall bathroom with updated laminate floors & shower over tub.
<b>Yard</b>	Fully fenced, private yard with ample space to relax, entertain or play!
<b>Garage</b>	Attached two-car spacious garage with storage.
<b>Heating</b>	Forced Air, Natural Gas
<b>Roof</b>	High quality composition.
<b>Year Built</b>	1983
<b>Utilities</b>	Water: Woodinville Water District Sewer: Woodinville Water District Electricity: Puget Sound Energy Gas: Puget Sound Energy Internet: Xfinity
<b>School District</b>	Northshore High School: Woodinville Middle School: Timbercrest Elementary : Sunrise