

16934 NE 131st Pl, Redmond

| \$1,295,000

## ROSEWOOD NEIGHBORHOOD



Complete details, photos, 3D tour, 4K video tour and Pre-Inspection at:

# EnglishHillHome.com



[www.EastsideHomes.com](http://www.EastsideHomes.com)

425-466-1000





## *Beautiful Two Story Home in Rosewood on English Hill*

The light-filled 2,491 s.f. floorplan features 4 bedrooms, 2.25 baths on a well-manicured 9,266 s.f. lot. Special features include: New Benjamin Moore exterior paint, seamless gutters with leaf guards, new carpet, updated kitchen and baths, central AC, dual pane vinyl Low-E windows throughout, heated bonus/flex space off garage, built-in home theater surround sound with outdoor audio on deck/patio, whole-home generator, Nest smart thermostat, Ring Security including video doorbell, 8 zone automatic irrigation with drip system, and storage shed with power.

Inviting, light-filled entry with beautiful hardwood floors. Bright and open formal living room with soaring ceiling, large windows, and ample space for entertainment or relaxation. Connected formal dining room with hardwood floors off kitchen. Remodeled kitchen with granite tile counters, beautiful cabinetry, granite tile backsplash, stainless steel appliances including duel fuel gas range, breakfast bar peninsula. Family room off kitchen with ample natural light, gas fireplace, and large slider leading to back deck and patio. Updated guest bathroom on main floor.

Gorgeous primary suite with vaulted ceiling, spacious primary bath and large walk-in closet. Large primary bath features luxury vinyl plank flooring, double vanity with tile counters, and tile wrapped walk-in shower. Three additional spacious bedrooms upstairs filled with natural light. Adjacent hall bathroom with luxury vinyl plank flooring and tile-wrapped shower over tub.

Fully fenced, private yard with lush plantings, large deck and patio for entertaining, and storage shed with power, shelving and bench. Ample space to relax, entertain or play! Attached two car garage with new Amare doors and belt drive openers, and wifi/phone wireless remote controls.

Northshore schools - Sunrise Elementary, Timbercrest Middle School & Woodinville High.





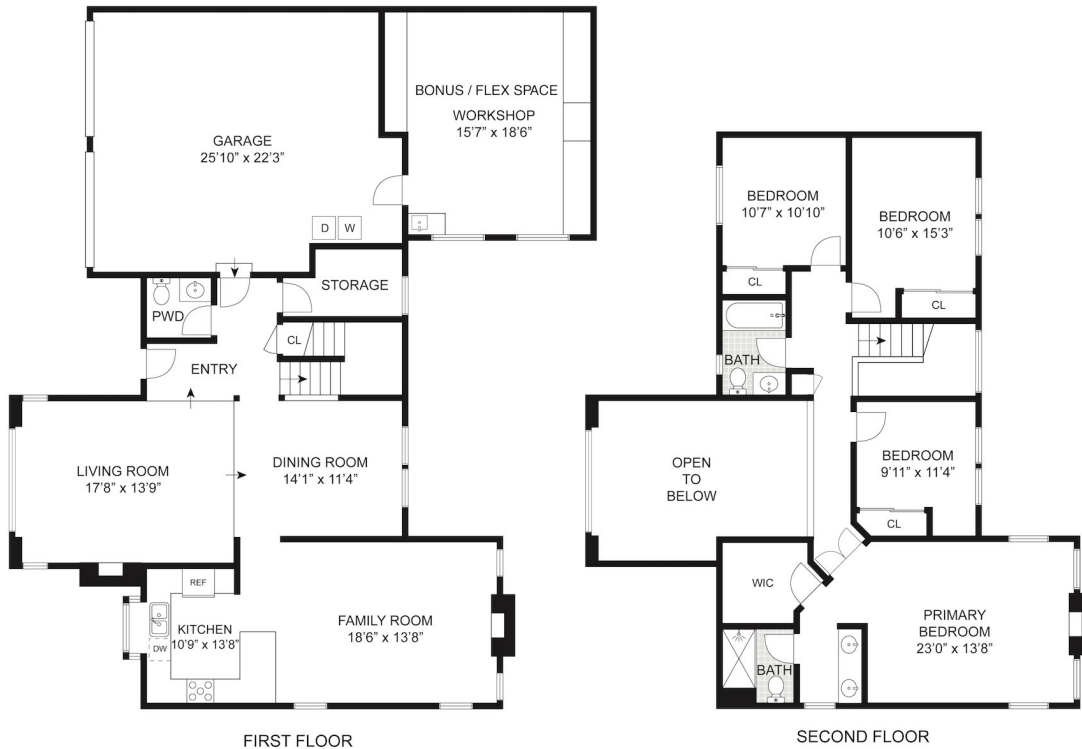
VIEW PROPERTY DETAILS ON YOUR PHONE

Type Website or Scan the QR Code to gain instant access



16934 NE 131st Place, Redmond

Property Details | Property Disclosures | Pre-Inspection Report  
Additional Photos | 3D Walkthrough | Video Tour



FIRST FLOOR

SECOND FLOOR

SIZES AND DIMENSIONS ARE APPROXIMATE, ACTUAL MAY VARY.

# Home Features

**Bedrooms 4 | Baths 2.25 | 2,491 Square Feet | 9,266 Sq. Ft. Lot | Bonus/Flex Room!**

<b>Style</b>	Two Story
<b>Bedrooms</b>	1 Primary Bedroom, 3 Additional Bedrooms
<b>Baths</b>	1 Full Bath, 3/4 Bath, 1/2 Guest Bath
<b>Flooring</b>	Hardwood, Luxury Vinyl Plank, Carpet
<b>Entry</b>	Inviting, light-filled entry with beautiful hardwood floors.
<b>Living Room</b>	Bright and open formal living room with soaring ceiling, large windows, built-in home theater surround sound.
<b>Dining Room</b>	Formal dining room with hardwood floors off kitchen.
<b>Kitchen</b>	Remodeled kitchen with granite tile counters, beautiful cabinetry, granite tile backsplash, stainless steel appliances including duel fuel gas range, and breakfast bar peninsula.
<b>Family Room</b>	Family room off kitchen with ample natural light, gas fireplace, and large slider leading to back deck and patio.
<b>Powder Room</b>	Guest bathroom on main floor.
<b>Primary Bedroom</b>	Gorgeous primary suite with vaulted ceiling, spacious primary bath and large walk-in closet.
<b>Primary Bathroom</b>	Large primary bath features luxury vinyl plank flooring, double vanity with tile counters, and tile wrapped walk-in shower.

<b>Bonus Room</b>	Heated bonus/flex space off garage.
<b>Bedrooms</b>	Three additional spacious bedrooms upstairs filled with natural light.
<b>Laundry</b>	Maytag high capacity washer/dryer set, located in garage!
<b>Hall Bath</b>	Hall bathroom with luxury vinyl plank flooring and tile-wrapped shower over tub.
<b>Yard</b>	Fully fenced, private yard with lush plantings, large deck & patio with outdoor audio, and storage shed with power, automatic 8-zone irrigation system.
<b>Garage</b>	Two car garage with new Amare doors & belt drive openers, and wifi/phone wireless remote controls.
<b>Heating</b>	Forced Air, Natural Gas.
<b>Roof</b>	High quality composition, Seamless gutters with leaf guards.
<b>Year Built</b>	1984
<b>Utilities</b>	Water: Woodinville Water District Sewer: Woodinville Water District Electricity: Puget Sound Energy Gas: Puget Sound Energy Internet: Xfinity / Ziplly
<b>School District</b>	Northshore High School: Woodinville Middle School: Timbercrest Elementary : Sunrise