

9808 NE 140th Pl, Kirkland

| \$850,000

CHARMINGKIRKLANDHOME.COM



VIEW PROPERTY DETAILS ON YOUR PHONE
Type Website or Scan the QR Code to gain instant access



[Property Details](#) | [Property Disclosures](#) | [Pre-Inspection Report](#) | [Additional Photos](#) | [3D Walkthrough](#) | [Video Tour](#)

Wonderful tri-level home in Juanita at the base of Finn Hill. The charming floorplan is 1,580 s.f. and features 3 bedrooms, 1.5 baths on a 7,695 s.f. lot! Special features include: new carpet throughout, luxury vinyl plank (LVP) flooring, and updated bathrooms.

Inviting, open entry greets you with vaulted ceilings on main floor, new carpet, open staircase and large coat closet. Bright and open formal living room with soaring ceiling, and large sun soaked bay window. Updated kitchen with gorgeous two-tone cabinetry, solid surface counters and ample storage. Spacious dining area is adjacent for a convenient layout.

Inviting, light-filled primary bedroom with large closet and ceiling fan. Additional bedroom on the upper level is spacious, with abundance of natural light. Adjacent updated hall bathroom with new sink, updated mirror & light fixture, stone flooring, and updated tub and surround.

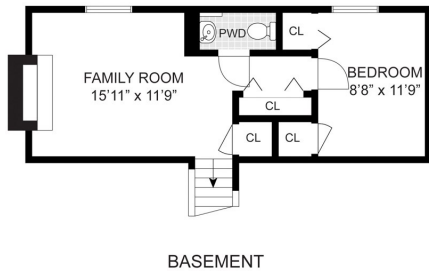
Relaxing family room features a beautiful brick fireplace with electric insert, large window, and plenty of space to relax, entertain or play! Large third bedroom and adjacent, updated powder room on lower level is great for guests. Laundry room with full size washer and dryer included!

Ample front and rear yard areas offers flexible space to relax or play. Attached two car garage with additional room for storage.

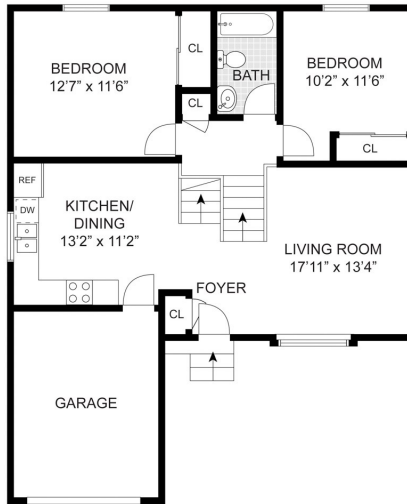
Lake Washington School District - Juanita Elementary, Finn Hill Middle School and Lake Washington High School.



9808 NE 140th Place, Kirkland

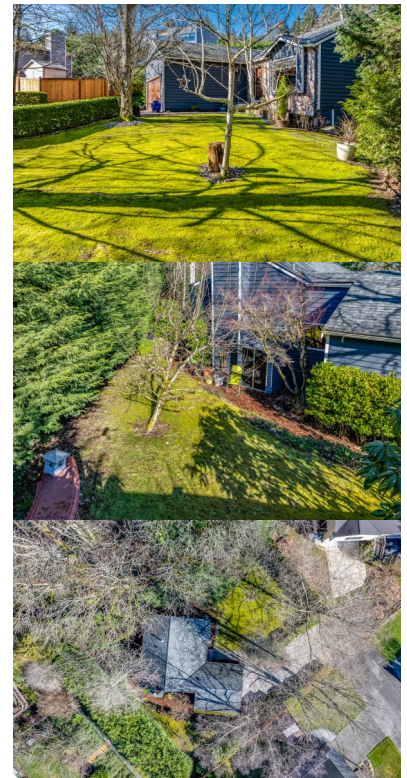


BASEMENT



FIRST FLOOR

SIZES AND DIMENSIONS ARE APPROXIMATE, ACTUAL MAY VARY.



Home Features

Bedrooms 3 | Baths 1.5 | 1,580 Square Feet | 7,695 Sq. Ft. Lot

Style	Tri-Level
Bedrooms	1 Primary Bedroom 2 Additional Bedrooms
Baths	1 Full Bath - Updated 1 Half Bath - Updated
Flooring	New Carpet New Luxury Vinyl Plank Vinyl Stone
Entry	Inviting, open entry greets you with vaulted ceilings on main floor, new carpet, open staircase and large coat closet.
Living Room	Bright and open formal living room with soaring ceiling, and large sun soaked bay window.
Dining Room	Spacious dining area adjacent to kitchen.
Kitchen	Updated kitchen with gorgeous two-tone cabinetry, solid surface counters and ample storage.
Family Room	Relaxing family room features a beautiful brick fireplace with electric insert, large window, and plenty of space to relax, entertain or play!
Primary Suite	Inviting, light-filled primary bedroom with large closet and ceiling fan.

Bedrooms	Two additional bedrooms are spacious.
Powder Room	Powder room on lower level is great for guests.
Laundry	Laundry room with full size washer and dryer included!
Yard	Ample front and rear yard areas offer flexible space to relax or play.
Garage	Attached two car garage with additional room for storage.
Heating/Cooling	Forced Air Gas Furnace
Roof	Composition
Year Built	1982
Utilities	Water: Northshore Sewer: Northshore Electricity: Puget Sound Energy Gas: Puget Sound Energy Internet: Xfinity / Ziplly Fiber
School District	Lake Washington School District High School: Lake Washington Middle School: Finn Hill Elementary: Juanita

