

CONDOINKIRKLAND.COM



VIEW PROPERTY DETAILS ON YOUR PHONE
Type Website or Scan the QR Code to gain instant access



Property Details | Property Disclosures | Pre-Inspection Report | Additional Photos | 3D Walkthrough | Video Tour

Wonderful Kirkland condo at the base of Finn Hill in Juanita. The spacious floorplan is 1,324 s.f. and features 3 bedrooms, 1.75 baths, plus a water view! Special features include: New carpet throughout, fresh paint, lofted primary suite with vaulted ceiling, carport parking space and storage unit.

The inviting entry greets you with gorgeous, light-filled living room and large coat closet. Bright and open formal living room with large sun soaked window, fireplace and vaulted ceiling. Spacious kitchen with tile flooring, solid surface counters and ample storage. Large, formal dining room with decorative light fixture, and door to the balcony!

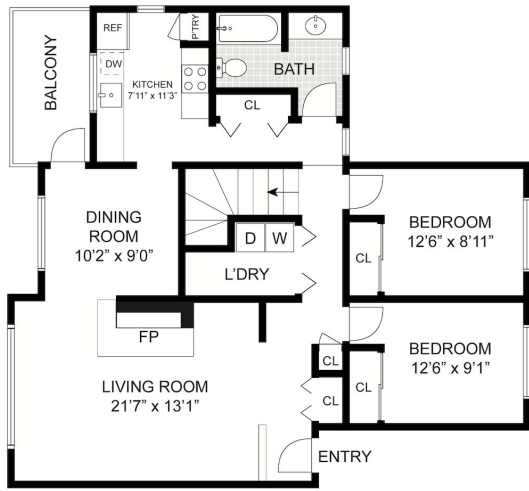
Gorgeous, lofted primary suite with wall of windows, vaulted ceiling, new carpet, and large primary bathroom with updated vanity and walk-in shower. Two additional bedrooms on the main level are spacious with large closets and vaulted ceilings. Adjacent full hall bathroom with updated vanity and light fixture, tile flooring and shower over tub.

Assigned carport parking space and storage unit are included! Additional parking available in front of building. Pending deck railing replacement project by HOA (special assessment to be paid by seller at closing), includes aluminum railing with glass inserts as shown on neighboring building to the Southwest.

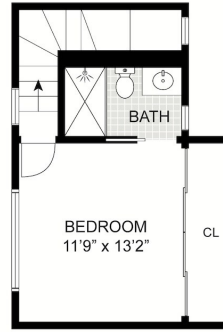
Lake Washington School District - Sandburg Elementary, Finn Hill Middle School, and Juanita High School.



11635 91st Place NE 2B, Kirkland



FIRST FLOOR



SECOND FLOOR

SIZES AND DIMENSIONS ARE APPROXIMATE, ACTUAL MAY VARY.



Home Features

Bedrooms 3 | Baths 1.75 | 1,324 Square Feet | Water View!

Style	Condo - 2 Levels
Bedrooms	1 Primary Bedroom 2 Additional Bedrooms
Baths	1 Full Bath 3/4 Bath
Flooring	Carpet, Laminate, Tile
Entry	The inviting entry greets you with gorgeous, light-filled living room and large coat closet.
Living Room	Bright and open formal living room with large sun soaked window, fireplace and vaulted ceiling.
Dining Room	Large, formal dining room with decorative light fixture, and door to the balcony!
Kitchen	Spacious kitchen with tile flooring, solid surface counters and ample storage.
Primary Suite	Inviting, light-filled primary bedroom with large closets and ceiling fan.
Bedrooms	Three additional bedrooms are spacious.

Laundry	Full size washer and dryer included!
Carpport	Assigned carport parking space and storage unit are included! Additional parking available in front of building.
Heating	-Electric - Baseboard, Wall Unit -Wood burning fireplace.
Roof	Composition
Year Built	1978
Utilities	Water: HOA Sewer: HOA Electricity: Puget Sound Energy Gas: N/A Internet: Xfinity / Zply Fiber
School District	Lake Washington School District High School: Juanita Middle School: Finn Hill Elementary: Carl Sandburg
Deck Railings	Pending deck railing replacement project by HOA (special assessment to be paid by seller at closing), includes aluminum railing with glass inserts as shown on neighboring building to the Southwest.

