

23233 SE 242nd St, Maple Valley

| \$790,000

MAPLEVALLEY-HOME.COM



VIEW PROPERTY DETAILS ON YOUR PHONE
Type Website or Scan the QR Code to gain instant access



Property Details | Property Disclosures | Pre-Inspection Report | Additional Photos | 3D Walkthrough | Video Tour

Beautiful two story home in Valley Green neighborhood of Maple Valley. The spacious 1,927 s.f. floorplan features 3 bedrooms, 2.25 baths on a fully fenced 7,017 s.f. lot! Special features include: Updated flooring, custom steam shower in primary bath, central AC, generator, RV Parking, and 3 car garage.

Inviting, spacious entry welcomes you with natural light and gorgeous ceramic tile flooring. Bright and open formal living room with vaulted ceiling and gas fireplace. Spacious dining room with large window sits just off the kitchen and living room. Kitchen with granite counters and stunning subway tile backsplash, gas range, double oven, stainless steel appliances, ample cabinetry, pantry closet, beautiful ceramic tile floors, and breakfast bar peninsula. Relaxing family room features gas fireplace, built-in shelving and cabinetry, and large windows overlooking back yard. Powder room on main floor is great for guests.

Inviting, spacious primary suite includes electric fireplace and ensuite primary bath with walk-in closet. Light-filled primary bath includes double vanity, tile counter, stunning custom steam shower with tile surround, and tile floors. Two additional upstairs bedrooms are spacious. Adjacent full hall bathroom with tile-wrapped shower over jetted tub.

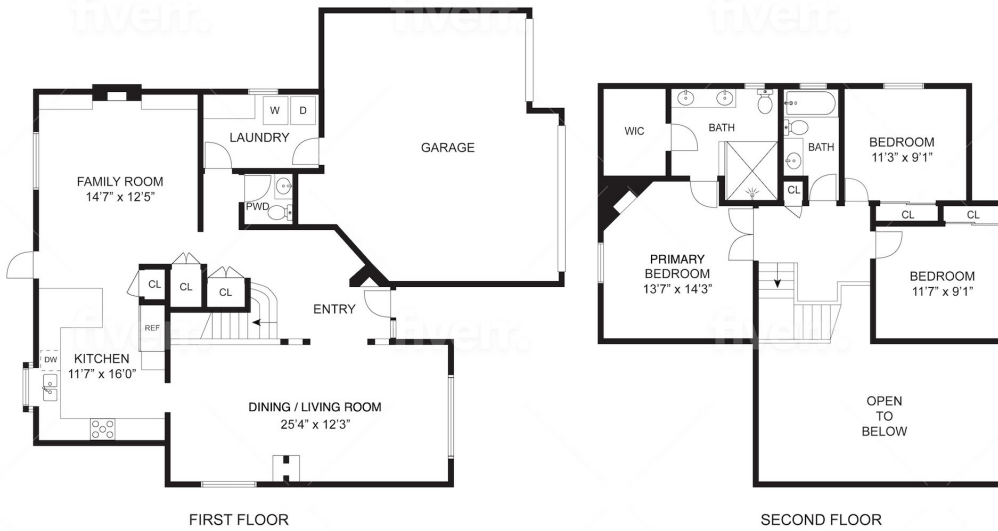
Laundry room with storage space and tile flooring located on main floor off the garage - full size washer and dryer included!

Private yard with huge patio, RV Parking, multiple storage sheds, lush plantings, and plenty of space for BBQing! Attached three car garage with work bench and additional room for storage.

Tahoma Schools District - Tahoma Elementary, Summit Trail Middle and Tahoma High.



23233 SE 242nd Street, Maple Valley



SIZES AND DIMENSIONS ARE APPROXIMATE, ACTUAL MAY VARY.



Home Features

Bedrooms 3 | Baths 2.25 | 1,927 Square Feet | 7,017 Sq. Ft. Lot | RV Parking

| | |
|-------------------------|--|
| Style | Two Story |
| Bedrooms | 1 Primary Bedroom 2 Additional Bedrooms |
| Baths | 1 Primary 3/4 Bath 1 Full Bath 1 Half Bath |
| Flooring | Carpet Ceramic Tile Laminate |
| Entry | Inviting, spacious entry welcomes you with natural light and gorgeous ceramic tile flooring. |
| Living Room | Bright and open formal living room with vaulted ceiling and gas fireplace. |
| Dining Room | Spacious dining room with large window sits just off the kitchen and living room. |
| Kitchen | Kitchen with granite counters and stunning subway tile backsplash, gas range, double oven, stainless steel appliances, ample cabinetry, pantry closet, beautiful ceramic tile floors, and breakfast bar peninsula. |
| Family Room | Relaxing family room features gas fireplace, built-in shelving and cabinetry, and large windows overlooking back yard. |
| Half Bath | Powder room on main floor is great for guests. |
| Primary Bedroom | Inviting, spacious primary suite includes electric fireplace and ensuite primary bath with walk-in closet. |
| Primary Bathroom | Light-filled primary bath includes double vanity, tile counter, stunning custom steam shower with tile surround, and tile floors. |

| | |
|------------------------|--|
| Bedrooms | Two additional bedrooms are spacious. |
| Hall Bath | Adjacent full hall bathroom with tile-wrapped shower over jetted tub. |
| Laundry | Laundry room with storage space and tile flooring located on main floor off the garage. Full size washer and dryer included! |
| Yard | Private yard with huge patio, RV Parking, multiple storage sheds, lush plantings, and plenty of space for BBQing! |
| Garage | Attached three car garage with work bench and additional room for storage. |
| Heating/Cooling | Forced Air Gas Furnace Central AC |
| Roof | Composition |
| Year Built | 1994 |
| Utilities | Water: Cedar River Sewer: Soos Creek Electricity: Puget Sound Energy Gas: Puget Sound Energy Internet: Xfinity |
| School District | Tahoma |
| | High School: Tahoma High Middle School: Summit Trail Elementary School: Tahoma |

